

New Printed and Electronic Resources for Potato Health Management.

P. S. Wharton and W. W. Kirk. Department of Plant Pathology, Michigan State University, East Lansing, MI 48824.

Introduction

Michigan potato growers face an array of diseases and depend on the use of integrated crop management (ICM) strategies to produce high quality potatoes to meet market demands. Integrated crop management is knowledge-based and information-intensive, as multiple control methods and a solid understanding of pathogen biology are required to achieve the kind of control growers once obtained from single broad-spectrum chemicals. As more growers consider and adopt ICM strategies, the availability of accurate information on topics such as identification of pathogens, pathogen life-cycles, currently labeled control chemicals, and alternative control tactics such as biological control is critical. MSU extension publications have been available to help growers make decisions about particular diseases. Unfortunately, these publications are outdated, provide limited information on the identity and biology of pathogens, and do not provide up-to-date information on current chemicals or control methods. With funding from Project GREEN and the Michigan Potato Industry Commission, we have started to address these problems with the production of a new series of extension bulletins, called Michigan Potato Diseases, on potato diseases in Michigan.

Bulletin Design and Layout

All the bulletins have the same design and layout as shown below.

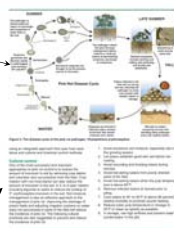
The disease is clearly identified at the top of the front page.

The identity of the pathogen is followed by a brief Introduction.

The introduction is followed by Symptoms, which contains a description of common disease symptoms with photographs.

The Disease Cycle section contains a detailed description of the life cycle of the pathogen and a graphical illustration.

The disease cycle is followed by Monitoring and Control which provides information on different methods of control, e.g., cultural control, host resistance and biological control, and chemical control.



Scouting Guide Design and Layout

The pocket scouting guide is printed on rugged tear- and waterproof paper and designed to be used in the field.

The scouting guide includes an introduction to disease scouting that provides the basic information required for successful disease scouting. This includes:

Strategies and tools for scouting.

Charts on potato growth stages.

A disease scouting calendar.

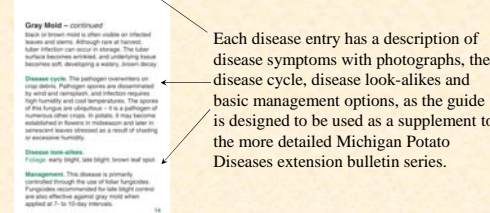


The guide covers the major diseases and physiological disorders of potatoes found in Michigan and is color coded for easy navigation.

Foliar diseases have a green banner.

Tuber diseases have a tan banner.

Physiological disorders have a blue banner.



Each disease entry has a description of disease symptoms with photographs, the disease cycle, disease look-alikes and basic management options, as the guide is designed to be used as a supplement to the more detailed Michigan Potato Diseases extension bulletin series.

Website Design and Layout

The website is designed to complement the printed extension bulletins and provides the same information in an electronic format.

The navigation menu on the left-hand side of the page allows for easy navigation through the website, or visitors can click on a photo and go directly to the associated page.



The website is updated regularly, which in the growing season may be on a daily basis. Any important news regarding potato diseases, such as disease outbreaks in Michigan is posted to the News and Alerts page.

Each potato disease extension bulletin has its own webpage. Where the printed version of the bulletin can be downloaded as a .pdf file.



The electronic versions of the bulletins are also updated more regularly than the printed version, providing the latest information on current methods of disease control, such as newly registered fungicides and their rates of application.

The Michigan Potato Diseases website also includes the Late Blight Risk Monitoring website, which provides Michigan growers with daily updates of the risk of late blight in the state and personalized spray recommendations based on their location.



Michigan Potato Diseases Bulletins

The following bulletins are now available for purchase from the MSU Bulletin Office:

